







EXTRA DURABLE FOR INDUSTRY DEMANDS

Comfortable, functional and durable, the Galaxy and Galaxy Light collections for men and women, represent the core of the ENGEL Workwear. Developed for all kinds of demanding work, this collection is crafted from extremely durable material to match those environments and to stand the test of time. Packed with smart features such as custom made tool pockets, reflector strips and concealed buttons and zippers to prevent damage when work working with delicate surfaces and materials, the wide range of jackets, sweat cardigans, T-shirts, vests and work trousers, ensure optimal comfort in all work situations, at all times of year.

1810-254

GALAXY WORK JACKET

SIZE XS-6XL
QUALITY 65% polyester/35% cotton, 290 g/m²
WASH

- Longer back section with pleat
- Elbows reinforced with CORDURA®
- Many functional pockets, including chest pockets with flaps, one with an extra zipper pocket
- Zipper chest pocket
- Adjustable cuffs
- Strap with D-ring
- Reflective print on shoulders as well as front and back for greater visibility
- Suitable for industrial laundering



COLOURS



2810-254

GALAXY WORK TROUSERS

SIZE EN 42-70 / 22-28 / 90-114 UK 28,5-50,5 / S31,5-S41 / L31,5-L41
QUALITY 65% polyester/35% cotton, 290 g/m²
WASH

- Ergonomically shaped knees
- Many functional pockets, e.g. thigh pocket with zipper pocket
- Two adjustment options for knee pads
- Knee and bottom hem reinforced with CORDURA®
- Hanging bottom on thigh pocket and ruler pocket
- Strap with D-ring
- Suitable for industrial laundering



COLOURS



2811-254

GALAXY WORK TROUSERS WITH HANGING TOOL POCKETS

SIZE EN 42-70 / 22-28 / 90-114 UK 28,5-50,5 / S31,5-S41 / L31,5-L41

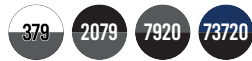
QUALITY 65% polyester/35% cotton, 290 g/m²

WASH

- Ergonomically shaped knees
- Many functional pockets, e.g. hanging tool pockets and thigh pocket with zipper pocket
- Two adjustment options for knee pads
- Knee and bottom hem reinforced with CORDURA®
- Hanging bottom on thigh pocket and ruler pocket
- Strap with D-ring
- Suitable for industrial laundering



COLOURS



3810-254

GALAXY BIB OVERALL

SIZE EN 42-70 / 22-28 / 90-114 UK 28,5-50,5 / S31,5-S41 / L31,5-L41

QUALITY 65% polyester/35% cotton, 290 g/m²

WASH

- Ergonomically shaped knees
- Elastic back
- Adjustable braces
- Many functional pockets, including a document pocket on the inside of the bib
- Two adjustment options for knee pads
- Knee and bottom hem reinforced with CORDURA®
- Hanging bottom on thigh pocket and ruler pocket
- Strap with D-ring
- Suitable for industrial laundering



COLOURS



4810-254

GALAXY BOILER SUIT

SIZE XS-6XL
QUALITY 65% polyester/35% cotton, 290 g/m²
WASH

- Ergonomically shaped knees
- Elastic waist
- Many functional pockets, e.g. zipper pocket on chest
- Elbows and knees reinforced with CORDURA®
- Adjustable cuffs
- Two adjustment options for knee pads
- Hanging bottom on thigh pocket and ruler pocket
- Strap with D-ring
- Reflective print on shoulders as well as front and back for greater visibility
- Suitable for industrial laundering



COLOURS



6812-254

GALAXY KNICKERS

SIZE EN 42-70 UK 28,5-50,5
QUALITY 65% polyester/35% cotton, 290 g/m²
WASH

- Ergonomically shaped knees
- Many functional pockets, e.g. thigh pocket with zipper pocket
- Possibility for knee pads
- Knee reinforced with CORDURA®
- Hanging bottom on thigh pocket and ruler pocket
- Strap with D-ring
- Suitable for industrial laundering



COLOURS



6810-254

GALAXY SHORTS

SIZE EN 42-66 UK 28,5-47
QUALITY 65% polyester/35% cotton, 290 g/m²
WASH

- Ideal fit
- Many functional pockets, e.g. thigh pocket with zipper pocket
- Ruler pocket reinforced with CORDURA®
- Hanging bottom on thigh pocket and ruler pocket
- Strap with D-ring
- Suitable for industrial laundering



COLOURS



5810-254

GALAXY SERVICE VEST

SIZE XS-6XL
QUALITY 65% polyester/35% cotton, 290 g/m²
WASH

- Longer back section with pleat
- Many functional pockets, e.g. zipper pocket on chest
- Strap with D-ring
- Reflective print on shoulders as well as front and back for greater visibility
- Suitable for industrial laundering



COLOURS



5850-193

GALAXY WINTER VEST

SIZE XS-6XL
QUALITY 100% polyester, 180 g/m²
 Quilted with FE-Insulate insulating layer
 Lining: 100% polyester
WASH

- High neck and longer back
- Front zipper
- Many functional pockets – all with zippers
- Elasticated bottom and armholes
- Reflective print on shoulders as well as front and back for greater visibility



COLOURS



1410-354

GALAXY WINTER JACKET

SIZE XS-6XL

QUALITY 100% polyester, 180 g/m². Quilted with FE-Insulate insulating layer. Lining: 100% polyester
 WP ≥ 13.000 Pa/15 < R_{et} ≤ 25m² Pa/W

WASH

- Waterproof and breathable
- High neck and longer back
- Elbows reinforced with CORDURA®
- Many functional pockets, including two spacious cross pockets with zipper
- Storm placket in sleeves and at bottom
- Detachable hood
- Taped seams
- Reflective print on shoulders as well as front and back for greater visibility



COLOURS



1410-354 // 2810-254

1820-912

GALAXY PILOT JACKET

SIZE XS-6XL
QUALITY 100% polyester with PU coating on the back, 235 g/m²
 Lining: 100% polyester quilted with FE-Insulate insulating layer
WASH

- Wind and water-repellent
- High neck
- Button placket with zipper and Velcro front closure
- Many functional pockets
- Elasticated bottom and sleeves
- Reflective print on shoulders as well as front and back for greater visibility



COLOURS



8810-229

GALAXY SOFTSHELL JACKET

SIZE XS-6XL
QUALITY 100% polyester bonded with microfleece, 300 g/m²
 WP 2.264 Pa / R_{ext} ≤ 15 m²Pa/W
WASH

- Longer back
- Reinforced elbows
- Concealed zipper and Velcro front closure
- Many functional pockets, including two spacious cross pockets with zipper
- Adjustment cord at bottom hem
- Reflective print on shoulders as well as front and back for greater visibility



COLOURS



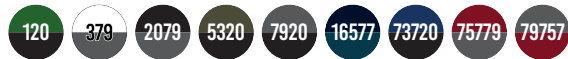
8820-233

GALAXY SWEAT CARDIGAN**SIZE** XS-6XL**QUALITY** 65% polyester/35% cotton bonded with
100% polyester microfleece, 320 g/m²**WASH** 

- Soft fleece on the inside
- Spacious cross pockets with zippers
- Ribbing at bottom and sleeves
- Cord ties in hood
- Reflective print on shoulders for greater visibility



OEKO-TEX®
STANDARD 100
BY HANNOVER

COLOURS

8830-233

**GALAXY SWEAT CARDIGAN
WITH COLLAR****SIZE** XS-6XL**QUALITY** 65% polyester/35% cotton bonded with
100% polyester microfleece, 320 g/m²**WASH** 

- Soft fleece on the inside
- Spacious cross pockets with zippers
- Ribbing at bottom and sleeves
- Reflective print on shoulders for greater visibility



OEKO-TEX®
STANDARD 100
BY HANNOVER

COLOURS

9810-141

GALAXY T-SHIRT

SIZE XS-6XL
QUALITY 60% cotton/40% polyester/
 single jersey, 180 g/m²
WASH

- Two-colour design
- Elastane in rib to retain the shape wash after wash
- Reinforced shoulder and neck seams
- Pre-shrunk to ensure that the product is dimensionally stable
- Reflective print on shoulders for greater visibility



COLOURS



9811-141 **NEW**

GALAXY POLO SHIRT

SIZE XS-6XL
QUALITY 60% cotton/40% polyester, 180 g/m²
WASH

- Two-colour design
- Pre-shrunk to ensure that the product is dimensionally stable
- Reinforced shoulder and neck seams
- Ribbed elastic to retain shape, wash after wash
- Reflective detail on shoulders for increased visibility
- Placket fastening with hidden press studs



COLOURS



1812-201

GALAXY RAIN JACKET

SIZE XS-4XL
QUALITY 100% polyester with PU-coating, 90 g/m²
 WP 3000 mm/MVP 3000 g
WASH

- Lightweight
- Taped seams
- Zipper and Velcro front closure
- Longer back
- Cross pockets with Velcro
- Chest pockets with zipper
- Holder for ID card
- Detachable hood
- Neoprene storm placket and adjustable cuffs in the sleeves
- Reflective print for greater visibility



TAPED SEAMS



COLOURS



2812-201

GALAXY RAIN TROUSERS

SIZE XS-4XL
QUALITY 100% polyester with PU-coating, 90 g/m²
 WP 3000 mm/MVP 3000 g
WASH

- Lightweight
- Taped seams
- Elasticated waist
- Detachable, adjustable and elastic braces
- Fly with zipper
- Cross pockets with Velcro
- Many functional pockets
- Zipper in side of leg bottoms
- Reflective print for greater visibility




TAPED SEAMS



COLOURS



1850-570

GALAXY COTTON WORK JACKET**SIZE** XS-4XL**QUALITY** 100% cotton, 350 g/m²**WASH** 

- Longer back section with pleat
- Elbows reinforced
- Many functional pockets, e.g. chest pockets with flaps, one with an extra zipper
- Adjustable cuffs
- Strap with D-ring
- Reflectors on front and back for greater visibility
- Suitable for industrial laundering



OEKO-TEX®
STANDARD 100
BY HANNOVER



100% COTTON

**COLOURS**


2850-570

GALAXY COTTON WORK TROUSERS**SIZE** EN 42-70 / 22-28 / 90-114 UK 28,5-50,5 / S31,5-S41 / L31,5-L41**QUALITY** 100% cotton, 350 g/m²**WASH** 

- Ergonomically shaped knees
- Many functional pockets, e.g. thigh pocket with zipper pocket
- Two adjustment options for knee pads
- Hanging bottom on thigh pocket and ruler pocket
- Strap with D-ring
- Reflectors on front and back for greater visibility
- Suitable for industrial laundering



OEKO-TEX®
STANDARD 100
BY HANNOVER



100% COTTON



KNEE PADS

**COLOURS**


3850-570

GALAXY COTTON BIB OVERALL

SIZE EN 42-70 / 22-28 / 90-114 UK 28,5-50,5 / S31,5-S41 / L31,5-L41

QUALITY 100% cotton, 350 g/m²

WASH      

- Ergonomically shaped knees
- Elastic back
- Adjustable braces
- Many functional pockets, including a zipper pocket on the inside of the bib
- Two adjustment options for knee pads
- Hanging bottom on thigh pocket and ruler pocket
- Strap with D-ring
- Reflectors on front and back for greater visibility
- Suitable for industrial laundering



100% COTTON



KNEE PADS



COLOURS



1850-570 // 2850-570

1290-880

GALAXY LIGHT WORK JACKET**SIZE** XS-4XL**QUALITY** 65% polyester/35% cotton, 210 g/m²**WASH** 

- Longer back with pleat
- Front zipper
- Many functional pockets, including two chest pockets with flap and one with zipper
- Adjustable cuffs
- Strap with D-ring
- Reflectors on front and back for greater visibility
- Suitable for industrial laundering



LIGHT WEIGHT

**COLOURS**

2290-880

GALAXY LIGHT WORK TROUSERS**SIZE** EN 42-70 / 22-28 / 90-114 UK 28,5-50,5 / S31,5-S41 / L31,5-L41**QUALITY** 65% polyester/35% cotton, 210 g/m²**WASH** 

- Ergonomically shaped knees
- Inner seam panel, providing a comfortable crotch seam
- Many functional pockets, e.g. thigh pocket with zipper pocket
- The thigh pocket has a box effect for extra spaciousness
- Hanging bottom on ruler pocket
- Strap with D-ring
- Reflectors at trouser leg ends for greater visibility
- Suitable for industrial laundering



LIGHT WEIGHT

**COLOURS**

3290-880

GALAXY LIGHT BIB OVERALL

SIZE EN 42-70 / 22-28 / 90-114 UK 28,5-50,5 / S31,5-S41 / L31,5-L41

QUALITY 65% polyester/35% cotton, 210 g/m²

WASH

- Ergonomically shaped knees
- Inner seam panel, providing a comfortable crotch seam
- Elastic back
- Adjustable braces
- Many functional pockets, including a zipper pocket on the inside of the bib
- Hanging bottom on ruler pocket
- Strap with D-ring
- Reflectors at trouser leg ends for increased visibility
- Suitable for industrial laundering



LIGHT WEIGHT



COLOURS



6290-880

GALAXY LIGHT SHORTS

SIZE EN 42-66 UK 28,5-47

QUALITY 65% polyester/35% cotton, 210 g/m²

WASH

- Inner seam panel, providing a comfortable crotch seam
- Many functional pockets, incl. thigh pocket with zipper pocket
- Ruler pocket with extra sections and hanging bottom
- The thigh pocket has a box effect for extra spaciousness
- Strap with D-ring
- Suitable for industrial laundering



LIGHT WEIGHT



COLOURS



2815-254

GALAXY LADIES TROUSERS

SIZE 34-48
QUALITY 65% polyester/35% cotton, 290 g/m²
WASH

- Specially designed for women
- Ergonomically shaped knees
- Elasticated waistband at the back ensures a good, comfortable fit and prevents the trousers from slipping down
- Many functional pockets, e.g. thigh pocket with zipper
- Two adjustment options for knee pads
- Hanging bottom on thigh pocket and ruler pocket
- Strap with D-ring
- Reflectors on backs of knees and at ankles for greater visibility
- Suitable for industrial laundering



COLOURS



3815-254

GALAXY LADIES BIB OVERALL

SIZE 34-48
QUALITY 65% polyester/35% cotton, 290 g/m²
WASH

- Specially designed for women
- Ergonomically shaped knees
- Elasticated back
- Adjustable braces
- Many functional pockets, including a document pocket on the inside of the bib
- Two adjustment options for knee pads
- Hanging bottom on thigh pocket and ruler pocket
- Reflectors on backs of knees and at ankles for greater visibility
- Suitable for industrial laundering



COLOURS



8815-229

GALAXY LADIES SOFTSHELL JACKET

SIZE XS-3XL
QUALITY 100% polyester bonded with microfleece, 300 g/m²
 WP 2.264 Pa / Ret ≤ 15 m² Pa/W
WASH

- Specially designed for women
- Tailored fit
- Concealed zipper and Velcro front closure
- Many functional pockets, including inside pockets with Velcro closure
- Reinforced elbows
- Velcro adjustment at sleeve ends
- Adjustment cord at the bottom hem
- Reflectors on shoulders as well as front and back for greater visibility



COLOURS



8825-233

GALAXY LADIES SWEAT CARDIGAN

SIZE XS-3XL
QUALITY 65% polyester/35% cotton bonded with 100% polyester microfleece, 320 g/m²
WASH

- Specially designed for women
- Tailored fit
- Soft fleece on the inside
- Front zipper
- Spacious cross pockets with zippers
- Ribbing at bottom and sleeves
- Reflective print on shoulders for greater visibility



COLOURS

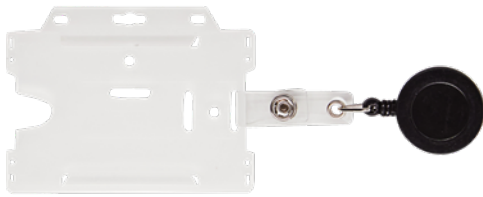


9070-336

YO-YO ID CARDHOLDER

SIZE one size
QUALITY Plastic

- Hard plastic
- The cardholder is supplied with a yo yo
- Can be installed either vertically or horizontally
- ID card can be easily released from the cardholder



9001-1 **NEW**

ELASTIC BRACES

SIZE one size
QUALITY 63% polyester/37% elastan
WASH

- Wide elastic straps for maximum support and comfort
- Easy adjustment
- Strong clips for secure and easy fastening
- Logo embossed
- Can be combined with all our trousers



COLOURS

20

9080-994

KNEE PADS

SIZE one size
QUALITY 100% EVA (Ethyl Vinyl Acetate)
WASH



- Ergonomic design for optimal protection
- Easy to insert
- High comfort, protection and flexibility
- Shock absorbing



COLOURS

20

0910-998

KNEE PADS

SIZE one size
QUALITY 100% Cellular rubber
WASH

- Ergonomic design
- Ultimate knee protection and comfort



COLOURS

20

0101-2

LEATHER BELT

SIZE 85 cm / 95 cm / 110 cm / 120 cm / 130 cm
QUALITY 100% leather

- Metal buckle
- Adjustable



COLOURS

20

9008-5

STRETCH BELT

SIZE One size (130 cm)
QUALITY 68% polypropylene/32% elastane
WASH [Washing symbols: machine wash, no bleach, no iron, no dry clean, no tumble dry]

- Stretch material
- Strong
- Metal buckle
- Adjustable
- Can be shortened easily



COLOURS

20

0108-210

KNITTED HAT WITH REFLECTOR STRIBES

SIZE one size
QUALITY 50% wool/50% acrylic
WASH [Washing symbols: 40°C, no bleach, no iron, no dry clean, no tumble dry, P (permanganate)]

- Thinsulate membrane
- Knitted
- Integrated reflector thread
- Warm hat in wool blend



COLOURS

20 78

9090-199

BEANIE

SIZE one size
QUALITY 100% cotton
WASH [Washing symbols: 40°C, no bleach, no iron, no dry clean, no tumble dry]

- Comfortable jersey quality
- Reflective print
- Integrated reflector thread
- Easily worn under a helmet



COLOURS

20

MEASUREMENT

BOTTOMS

NORMAL TROUSER LENGTH – leg length 82 cm																	
Waist measurement cm	72	76	80	84	88	92	96	100	104	108	112	116	120	124	128	132	136
DE - NL*	42	44	46	48	50	52	54	56	58	60	62	64	66	68	70	72	74
DE - NL**	36	40	44	46	48	50	52	54	56	56A	58	58A	60	62	64	66	68
DE - NL***	36	40	44	46	48	50	52	54	56	58	60	62	64	66	68	70	72
B - P - CH - ES - FR	36	38	40	42	44	46	48	50	52	54	56	58	60	62	64	66	68
UK	28,5"	30"	31,5"	33"	34,5"	36"	38"	39,5"	41"	42,5"	44"	45,5"	47"	49"	50,5"	52"	53,5"

* Galaxy, Combat, X-treme, PROplus+, Cargo, Safety

** Standard, Enterprise

*** Light, Safety+

EXTRA LEG LENGTH – leg length 88-92 cm							
Waist measurement cm	80	84	88	92	96	100	104
DE - NL	90	94	98	102	106	110	114
B - P - CH - ES - FR	40L	42L	44L	46L	48L	50L	52L
UK	L31,5"	L33"	L34,5"	L36"	L38"	L39,5"	L41"

SHORTER LEG LENGTH – leg length 76-77 cm															
Waist measurement cm	80	84	88	92	96	100	104	108	112	116	120	124	128	132	136
DE - NL	22	23	24	25	26	27	28	29	30	31	32	33	34	35	36
B - P - CH - ES - FR	40C	42C	44C	46C	48C	50C	52C	54C	56C	58C	60C	62C	64C	66C	68C
UK	S31,5"	S33"	S34,5"	S36"	S38"	S39,5"	S41"	S42,5"	S44"	S45,5"	S47"	S49"	S50,5"	S52"	S53,5"

TOPS

SIZES										
Chest measurement cm	88	94	100	106	112	118	124	130	136	142
Int. sizes	XS	S	M	L	XL	2XL	3XL	4XL	5XL	6XL
Neck width	35/36	37/38	39/40	41/42	43/44	45/46	47/48	49/50	51/52	53/54

TO MEASURE YOUR SIZE CORRECTLY:

Get someone to help you. If you do, you'll get a more exact reading. Keep your shirt and trousers on and stand in a relaxed position. Let your arms hang loosely by your sides. Draw the tape measure horizontally around your body. It should lie close into the body, but should not be too tight.

- A** Measure around neck (measure tightly + 2 cm)
- B** Measure around the chest with arms flat along side of body
- C** Measure around body where waistband is to be placed
- D** Measure from crotch to floor inside at leg (without shoes)



MEASUREMENT LADIES

BOTTOMS

SIZES								
Waist measurement cm	64-72	68-76	72-80	76-84	80-88	85-93	90-98	96-104
Hip measurement cm	90-93	94-97	98-101	102-105	106-109	110-113	114-118	119-124
Leg length cm	80	80	80	80	80	80	80	80
DE - NL - B - P - CH - ES - FR	34	36	38	40	42	44	46	48
UK	6"	8"	10"	12"	14"	16"	18"	20"

TOPS

SIZES							
Int. sizes	XS	S	M	L	XL	2XL	3XL
Chest measurement cm	82	88	94	100	106	112	118

TO MEASURE YOUR SIZE CORRECTLY:

Get someone to help you. If you do, you'll get a more exact reading. Keep your shirt and trousers on and stand in a relaxed position. Let your arms hang loosely by your sides. Draw the tape measure horizontally around your body. It should lie close into the body, but should not be too tight.

- A** Measure around neck (measure tightly + 2 cm)
- B** Measure around the chest with arms flat along side of body
- C** Measure around body where waistband is to be placed
- D** Measure from crotch to floor inside at leg (without shoes)
- F** Measure around your hips





F. Engel K/S · Norgesvej 12 · DK-6100 Haderslev
Tel. (+45) 7422 3535 · Fax (+45) 7422 3519
export-sales@f-engel.com · www.engel.eu